

## Urine Protein Concentration with Vivaspin<sup>®</sup> Concentrators



Application  
Note

#08

#09

#10

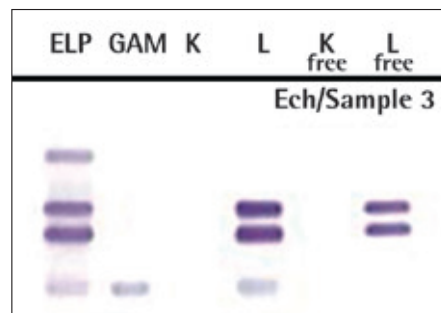
#11

#12

### Background

Measurement of proteins in urine is important for the diagnosis and monitoring of a variety of diseases and disorders. Normally proteins larger than 100,000 daltons (100 kDa) such as immunoglobulins are retained in blood and much smaller molecules (<10 kDa) pass freely into the urine. Intermediate sized molecules such as albumin (~69 kDa) and free light chains (FLC) (~25 kDa) will pass into urine to varying degrees and then usually be reabsorbed by the nephron tubular system. However proteins can be excreted in urine as the result of several conditions. Proteinuria (excess protein in urine) is associated with glomerular and tubular diseases of the nephron as well as plasma cell disorders that cause elevated protein concentrations in the blood (overflow proteinuria). These plasma cell diseases include multiple myeloma (MM) and light chain amyloidosis (AL) and are diagnosed by the presence of monoclonal FLC, also known as Bence Jones protein (1).

The International Myeloma Working Group recommends that, after diagnosis of a plasma cell disorder is made, patients should be monitored by urine protein electrophoresis (UPE) and immunofixation electrophoresis (IFE). Additionally, initial screening for AL should be done with urine samples as well as serum (2). IFE uses antisera to identify the monoclonal protein (M-protein) as an immunoglobulin (IgG, IgA, IgM, IgD or IgE) or as a FLC. The FLC can be present as 25 kDa monomers ( $\kappa$  or K) or as 50 kDa dimers ( $\lambda$  or L). Most urine IFE samples are run with antisera for IgG, IgA, IgM,  $\kappa$  and  $\lambda$  since these represent over 90% of the M-protein isotypes (3).



**Figure 1: IFE of Concentrated (50 $\times$ ) Urine Sample**  
Urine sample IFE showing the presence of M-protein. Antisera selected for IgG/IgA/IgM (grouped as GAM) as well as K & L and free K & L chains. Sample shows two free L chains (dark bands in middle) and one L chain bound to a heavy chain (light band on bottom). (Photo provided by Sebia USA)

Many investigators report that 24 hour urine collection samples need to be adequately concentrated prior to UPE and IFE (4)(5)(6)(7). Densitometer scans of the UPE are then used to quantitate the amount of M-protein in the urine sample (4)(7). The required degree of concentration can vary according to the electrophoretic gel and the amount of protein in the sample. While many labs concentrate 50 – 100 $\times$ , excessive concentration should be avoided since it can overload the gel (5). On the other hand, insufficient concentration can lead to not diagnosing some cases with M-proteins (8). The concentration factor (CF) is calculated by dividing the starting sample volume by the final volume.

Aside from UPE and IFE, capillary electrophoresis (CE) systems are also available and provide rapid, automated separations. The electropherogram from a CE system is similar to a densitometry scan. M-protein identification can be performed with CE using antisera and is referred to "immunotyping" by Sebia or "immunodisplacement" by Helena Labs.

## Concentrators

Urine concentrators utilize ultrafiltration (UF) membranes which can retain proteins on the basis of their rated molecular weight cutoff (MWCO). While the proteins are filtered by the membrane, water, salts and other small molecules pass through thereby reducing the sample volume and concentrating the retained proteins. Water can be filtered through the UF membrane using centrifugal force or absorbent material behind the filter. In order to maximize recovery of M-proteins, the concentrator should have a membrane with a MWCO of 10 kDa or less.

Vivaspin® centrifugal concentrators are designed to be used with swinging bucket or fixed angle rotors. They use a patented (US 5,647,990) vertical membrane design with thin channel support to provide high speed filtration. For urine concentration, the 10 kDa MWCO is recommended for optimal recovery. The Vivaspin® have clearly marked volumes and dead stop compartments to prevent samples from concentrating to dryness. Vivaspin® are available for a variety of sample volumes ranging from 0.5 ml to 20 ml. Urine samples of 4 ml may be concentrated 50× in about 15–20 minutes depending on the initial total protein.

Most labs use Vivaspin® devices in the 4–6 ml range, for UPE and IFE while others, such as the Mayo Clinic, report a preference for the larger Vivaspin® 20 (6). Vivaspin® can yield high concentration factors (up to 200×).

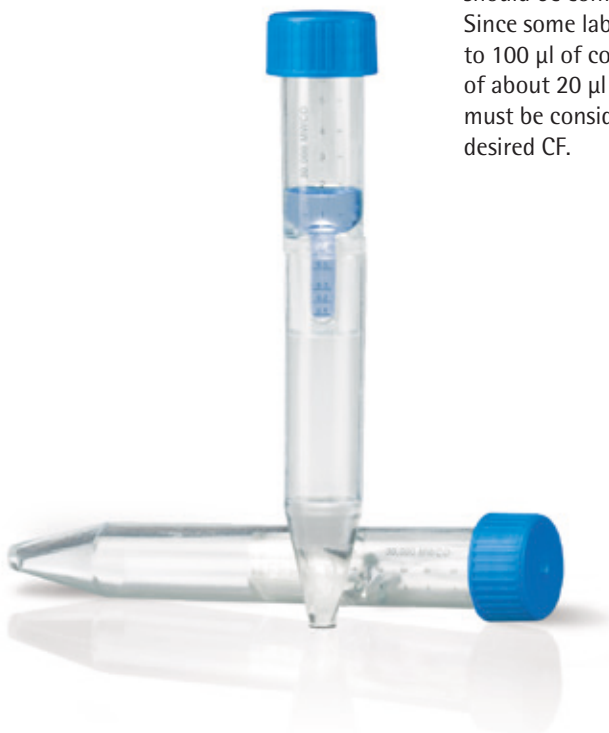
## Procedures

Samples for UPE or IFE are typically collected from 24 hour urine patient specimens. First the initial total protein (TP) should be measured using colorimetric dye binding or a similar method. Then the urine should be treated to remove any sediment which could interfere with the electrophoresis results (9). Such sediment can also slow down filtration rates during concentration and even totally obstruct the membrane. The sample can be clarified by use of a 10–20 µm disposable filter or by centrifuging the sample for about 5 minutes at 1000–2000 g.

As mentioned previously, the sample must be concentrated enough to provide visible bands after UPE and IFE yet not so much that the gel is overloaded. Laboratories will normally use the initial TP to determine the desired CF. The CF calculation is dependent on the minimum TP recommended for the gel being used. Most samples should be concentrated to at least 2–3 G/dL for UPE and slightly less for IFE but these numbers should be confirmed with the gel supplier. Since some labs require IFE volumes of up to 100 µl of concentrated urine (instead of about 20 µl for UPE), this final volume must be considered when calculating the desired CF.

After determining the target CF, most labs will first fill the sample reservoir to its rated capacity and stop the concentration process at the appropriate final volume. With a Vivaspin®, the centrifugation time is adjusted to yield the correct final volume but this can be a trial and error process. If a sample is concentrated too much, filtrate or purified water | buffer can be added back to reconstitute the sample to the desired volume. Other labs will reduce the starting volume in order to reduce the final CF. This method has been used for Vivaspin® and has the added benefit of reducing the centrifugation time since less sample has to be filtered.

Laboratories will usually generate a chart showing the target CF as a function of the starting TP concentration. Examples of charts are shown in Tables 1 and 2. The values shown in these tables depend on: (1) the type of concentrator, (2) choice of UPE or IFE, (3) the final desired TP for electrophoresis, and (4) the choice of constant or variable sample volume. Note that the CF values are only suggestions and increased concentration may be needed to detect faint M-protein bands in some cases. Following concentration, M-protein peaks found on the gel should be scanned and fractionated on a densitometer. Then the amount of M-protein in the 24 hour urine sample may be calculated by multiplying the amount of that fraction in the electropherogram by the starting urinary TP concentration (4)(7).



Initial TP Conc. (mg/dL)	Sample Volume (mL)	Conc. Volume (μL)	Conc. Factor	Final TP Conc. (G/dL)
< 25	8	100	80	< 2.0
25 – 50	4	100	40	1.0 – 2.0
51 – 100	2	100	20	1.0 – 2.0
101 – 250	1	100	10	1.0 – 2.5
> 250	0.4	100	4	> 1.0

**Table 1: Urine Concentration Chart**

Values for IFE using a Vivaspin® 4 with Variable Sample Volume and desired Final TP of 1.0 G/dL

**Note**

Two Vivaspin® 4 devices are used to provide enough sample for IFE.

Need 8 mL total sample concentrated to 50 μL in each Vivaspin®.

Starting TP Conc (mg/dL)	Sample Volume (mL)	Conc. Volume (μL)	Conc. Factor	Final TP Conc. (G/dL)
< 17	6	30	200	< 3.4
17 – 40	6	50	120	2.0 – 4.8
41 – 70	6	100	60	2.5 – 4.2
71 – 170	6	200	30	2.1 – 5.1
171 – 340	6	500	12	2.1 – 4.1
> 340	6	1000	6	> 2.0

**Table 2: Values for UPE using a Vivaspin® 6 with Constant Sample Volume and desired Final TP of 2.0 G/dL**

Capillary electrophoresis systems require urine samples to be prepared by ultrafiltration devices prior to analysis. Samples are first diluted with water and concentrated to remove salts. Then buffer is added and samples are centrifuged again to exchange the buffer. Sebia and Helena Labs both recommend the use of Vivaspin® 20 devices to prepare urine samples for their capillary systems (10)(11).

**CAP Validation**

Concentration procedures should be validated on a regular basis to comply with quality inspections conducted by the College of American Pathologists (CAP) (USA laboratories only). One popular method involves measuring TP recovery after concentrating urine samples according these steps:

- (1) Prepare the urine as discussed previously and determine the initial TP (TP1).
- (2) Fill the concentrator with the sample volume (V1) and perform the concentration.
- (3) Measure the final volume (V2) accurately and then measure the final TP (TP2).
- (4) Calculate the CF according to the equation  $CF = V1 \div V2$ .
- (5) Calculate the recovery (R) where  $R = 1000 \times TP2 \div (CF \times TP1)$ . The 1000 factor is to convert TP2 from G/dL to mg/dL. Multiply by 100 for %.

The sample results can be entered into a spreadsheet to calculate the average TP recovery (see example in Table 3). Labs should define their own quality criteria but 70 – 80% is usually acceptable.

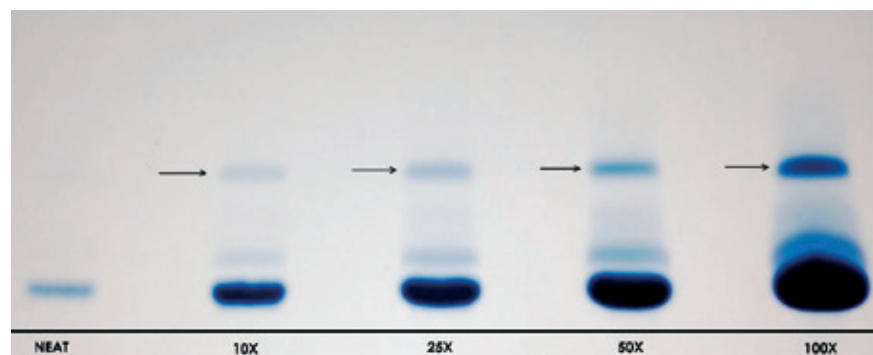
Sample Number	TP1 – Starting Conc. (mg/dL)	V1 – Sample Volume (mL)	V2 – Conc. Volume (μL)	CF	TP2 – Final Conc. (G/dL)	Recovery $R=1000 \times \frac{TP2}{CF \times TP1}$
1	30	4	50	80	2.0	83%
2	120	4	200	20	2.2	92%
3	18	4	20	200	2.9	81%
4	60	4	100	40	2.1	88%
<b>Average</b>						<b>86%</b>

**Table 3: Urine Concentration CAP Validation Chart**

Values for TP readings using Vivaspin® 4 devices with various patient samples.

Note that using TP is not completely accurate as a method to check recovery of M-proteins. TP values can include small proteins and polypeptides that are not clinically significant when diagnosing M-proteins. These small molecules can pass through the membrane and not be concentrated so they reduce the TP recovery %. Samples with higher TP values usually show higher recoveries since the small molecules represent a lesser percentage of the total.

Another method for validation is to perform a series of concentration tests on split samples. For example, the urine could be split into 5 samples of 5 ml each. Four of these could be concentrated to the following CF values: (1) 10x, (2) 25x, (3) 50x and (4) 100x. A UPE would be performed for each of these along with the unconcentrated (neat) sample. The bands of the UPE should become darker as the CF increases. Note that this is not a quantitative test but is used by some labs (see Figure 2).



**Figure 2: CAP Validation by Serial Concentration of Urine Sample**

Patterns for UPE for a single urine sample with starting TP of 30 – 100 mg/dL (measured by Multistix 10). Albumin bands show on bottom & monoclonal FLC (Bence Jones protein) show on top (see arrows). Sample is split and concentrated to increasing CF as shown on bottom. Note that the Neat sample does not show a visible FLC band.

## References

- Winter, W.E. (2012). Urine Protein Electrophoresis. In: Harris, N.S. & Winter, W.E. (editors). Multiple Myeloma and Related Serum Protein Disorders: An Electrophoretic Guide. 1<sup>st</sup> ed. (pp. 83 – 115). New York: Demos Medical Publishing.
- International Myeloma Working Group (2009). International Myeloma Working Group Guidelines for Serum-Free Light Chain Analysis in Multiple Myeloma and Related Disorders. *Leukemia*, 23, 215 – 224.
- Keren, D.F. (2012). Protein Electrophoresis in Clinical Diagnosis. (pp. 105 – 154). Chicago: ASCP Press.
- International Myeloma Workshop Consensus Panel 3 (2011). Consensus Recommendations for Standard Investigative Workup: Report of the International Myeloma Workshop Consensus Panel 3. *Blood*, 117, 4701 – 4705.
- Keren, D.F. (2012). Protein Electrophoresis in Clinical Diagnosis. (pp. 155 – 178). Chicago: ASCP Press.
- Katzmann, J., Kyle, R.A., Lust, J., Snyder, M. & Dispenzieri, A. (2012). Immunoglobulins and Laboratory Recognition of Monoclonal Proteins. In: Wiernik, P.H., Goldman, J.M., Dutcher, J.P. & Kyle, R.A. (editors). Neoplastic Diseases of the Blood. 5th ed. (pp. 565 – 588). New York: Springer.
- Kyle, R.A. (1999). Sequence of Testing for Monoclonal Gammopathies: Serum and Urine Assays. *Arch Pathol Lab Med*, 123(2), 114 – 118.
- Kaplan, I.V. & Levinson, S.S. (1999). Misleading Urinary Protein Pattern in a Patient with Hypogammaglobulinemia: Effects of Mechanical Concentration of Urine. *Clin Chem*, 45(3), 417 – 419.
- Keren, D.F., Gulbranson, R. & Ebrom, S.J. (2004). False-Negative Urine Protein Electrophoresis by Semi-Automated Gel Electrophoresis. *Clin Chem*, 50(5), 933 – 934.
- Sebia (2012). Capillary Urine Assay Using 20 mL Vivaspin® Tubes or Equivalent. Sebia Quick Reference Guide CPY 41 | Rev. 07.12.2012.
- Helena Labs (2013). Quick Guide for V8 CE: Urine Prep with VS2002 Centrifugal Concentrators\*. Helena Labs Quick Guide.

\* For Investigational Use Only: The performance characteristics of this product have not been established.

# Sales and Service Contacts

For further contacts, visit [www.sartorius.com](http://www.sartorius.com)

## Europe

### Germany

Sartorius Lab Instruments  
GmbH & Co. KG  
Weender Landstrasse 94-108  
37075 Goettingen

Phone +49.551.308.0  
Fax +49.551.308.3289

### France & Suisse Romande

Sartorius France  
2, rue Antoine Laurent de Lavoisier  
ZA de la Gaudrée  
91410 Dourdan

Phone +33.1.70.62.50.00  
Fax +33.1.64.59.76.39

### Austria

Sartorius Austria GmbH  
Modecenterstrasse 22  
1030 Vienna

Phone +43.1.7965760.0  
Fax +43.1.7965760.24

### Belgium

Sartorius Belgium N.V.  
Leuvensesteenweg, 248/B  
1800 Vilvoorde

Phone +32.2.756.06.71  
Fax +32.2.253.45.95

### Finland & Baltics

Sartorius Biohit Liquid Handling Oy  
Laippatie 1  
00880 Helsinki

Phone +358.9.755.951  
Fax +358.9.755.95.200

### Hungary

Sartorius Hungária Kft.  
Kagyló u. 5.  
2092 Budakeszi

Phone +3623.457.227  
Fax +3623.457.147

### Ireland

Sartorius Ireland Ltd.  
Unit 41, The Business Centre  
Stadium Business Park  
Ballycoolin Road  
Dublin 11

Phone +353.1.8089050  
Fax +353.1.8089388

### Italy

Sartorius Italy S.r.l.  
Viale A. Casati, 4  
20835 Muggiò (MB)

Phone +39.039.4659.1  
Fax +39.039.4659.88

### Netherlands

Sartorius Netherlands B.V.

Phone +31.30.60.53.001  
Fax +31.30.60.52.917

[info.netherlands@sartorius.com](mailto:info.netherlands@sartorius.com)

### Poland

Sartorius Poland sp.z o.o.  
ul. Wrzesinska 70  
62-025 Kostrzyn

Phone +48.61.6473830  
Fax +48.61.6473839

### Russian Federation

LLC "Sartorius ICR" and LLC "Biohit"  
Uralskaya str. 4, Lit. B  
199155, Saint-Petersburg

Phone +7.812.327.5.327  
Fax +7.812.327.5.323

### Spain & Portugal

Sartorius Spain, S.A.  
Avda. de la Industria, 32  
Edificio PAYMA  
28108 Alcobendas (Madrid)

Phone Spain +34.902.123.367  
Phone Portugal +351.800.855.800  
Fax Spain +34.91.358.96.23  
Fax Portugal +351.800.855.799

### Switzerland

Sartorius Mechatronics Switzerland AG  
Ringstrasse 24a  
8317 Tagelswangen (ZH)

Phone +41.44.746.50.00  
Fax +41.44.746.50.50

### U.K.

Sartorius UK Ltd.  
Longmead Business Centre  
Blenheim Road, Epsom  
Surrey KT19 9QQ

Phone +44.1372.737159  
Fax +44.1372.726171

### Ukraine

LLC "Biohit"  
Post Box 440 "B"  
01001 Kiev, Ukraine

Phone +380.44.411.4918  
Fax +380.50.623.3162

## America

### USA

Sartorius Corporation  
5 Orville Drive, Suite 200  
Bohemia, NY 11716

Phone +1.631.254.4249  
Toll-free +1.800.635.2906  
Fax +1.631.254.4253

### Argentina

Sartorius Argentina S.A.  
Int. A. Avalos 4251  
B1605ECS Munro  
Buenos Aires

Phone +54.11.4721.0505  
Fax +54.11.4762.2333

### Brazil

Sartorius do Brasil Ltda  
Avenida Senador Vergueiro 2962  
São Bernardo do Campo  
CEP 09600-000 - SP- Brasil

Phone +55.11.4362.8900  
Fax +55.11.4362.8901

### Canada

Sartorius Canada Inc.  
2179 Dunwin Drive #4  
Mississauga, ON L5L 1X2

Phone +1.905.569.7977  
Toll-Free +1.800.668.4234  
Fax +1.905.569.7021

### Mexico

Sartorius de México S.A. de C.V.  
Circuito Circunvalación Poniente  
No. 149  
Ciudad Satélite  
53100, Estado de México  
México

Phone +52.5555.62.1102  
Fax +52.5555.62.2942

## Asia | Pacific

### Australia

Sartorius Australia Pty. Ltd.  
Unit 5, 7-11 Rodeo Drive  
Dandenong South Vic 3175

Phone +61.3.8762.1800  
Fax +61.3.8762.1828

### China

Sartorius Scientific  
Instruments (Beijing) Co., Ltd.  
33 Yu An Road, Airport Industrial Park  
Zone B,  
Shunyi District, Beijing 101300,  
P.R.China

Phone +86.10.8042.6300  
Fax +86.10.8042.6486

### Hong Kong

Sartorius Hong Kong Ltd.  
Unit 1012, Lu Plaza  
2 Wing Yip Street  
Kwun Tong  
Kowloon, Hong Kong

Phone +852.2774.2678  
Fax +852.2766.3526

### India

Sartorius Weighing India Pvt. Ltd.  
#69/2-69/3, NH 48, Jakkasandra,  
Nelamangala Tq  
562 123 Bangalore, India

Phone +91.80.4350.5250  
Fax +91.80.4350.5253

### Japan

Sartorius Japan K.K.  
4th Fl., Daiwa Shinagawa North Bldg.  
8-11, Kita-Shinagawa 1-chome  
Shinagawa-ku, Tokyo, 140-0001 Japan

Phone +81.3.3740.5408  
Fax +81.3.3740.5406

### Malaysia

Sartorius Malaysia Sdn. Bhd  
Lot L3-E-3B, Enterprise 4  
Technology Park Malaysia  
Bukit Jalil  
57000 Kuala Lumpur, Malaysia

Phone +60.3.8996.0622  
Fax +60.3.8996.0755

### Singapore

Sartorius Singapore Pte. Ltd  
1 Science Park Road,  
The Capricorn, #05-08A,  
Singapore Science Park II  
Singapore 117528

Phone +65.6872.3966  
Fax +65.6778.2494

### South Korea

Sartorius Korea Ltd.  
8th Floor, Solid Space B/D,  
PanGyoYeok-Ro 220, BunDang-Gu  
SeongNam-Si, GyeongGi-Do, 463-400

Phone +82.31.622.5700  
Fax +82.31.622.5799

### Thailand

Sartorius (Thailand) Co. Ltd.  
129 Rama 9 Road,  
Huaykwang  
Bangkok 10310

Phone +66.2643.8361-6  
Fax +66.2643.8367



◀ [www.sartorius.com](http://www.sartorius.com)